

PERRY COUNTY INDUSTRIAL BUILDING

Property Advantages:

- ⇒ 200,000+ Square Feet
- ⇒ Adjacent to FedEx Facility
- ⇒ 300,000 SF Concrete Pad Behind Building for Expansion



CHAVIES, PERRY COUNTY, KENTUCKY

37° 21' 42.68"N - 83° 16' 49.89"W



Charles Sexton

CEO

270.832.5990

chuck@OneEastKY.com

Table of Contents

1. Aerial Map
2. Infrastructure Map
3. Interior Photo
4. Regional Transportation Map
5. Local Map
6. Data

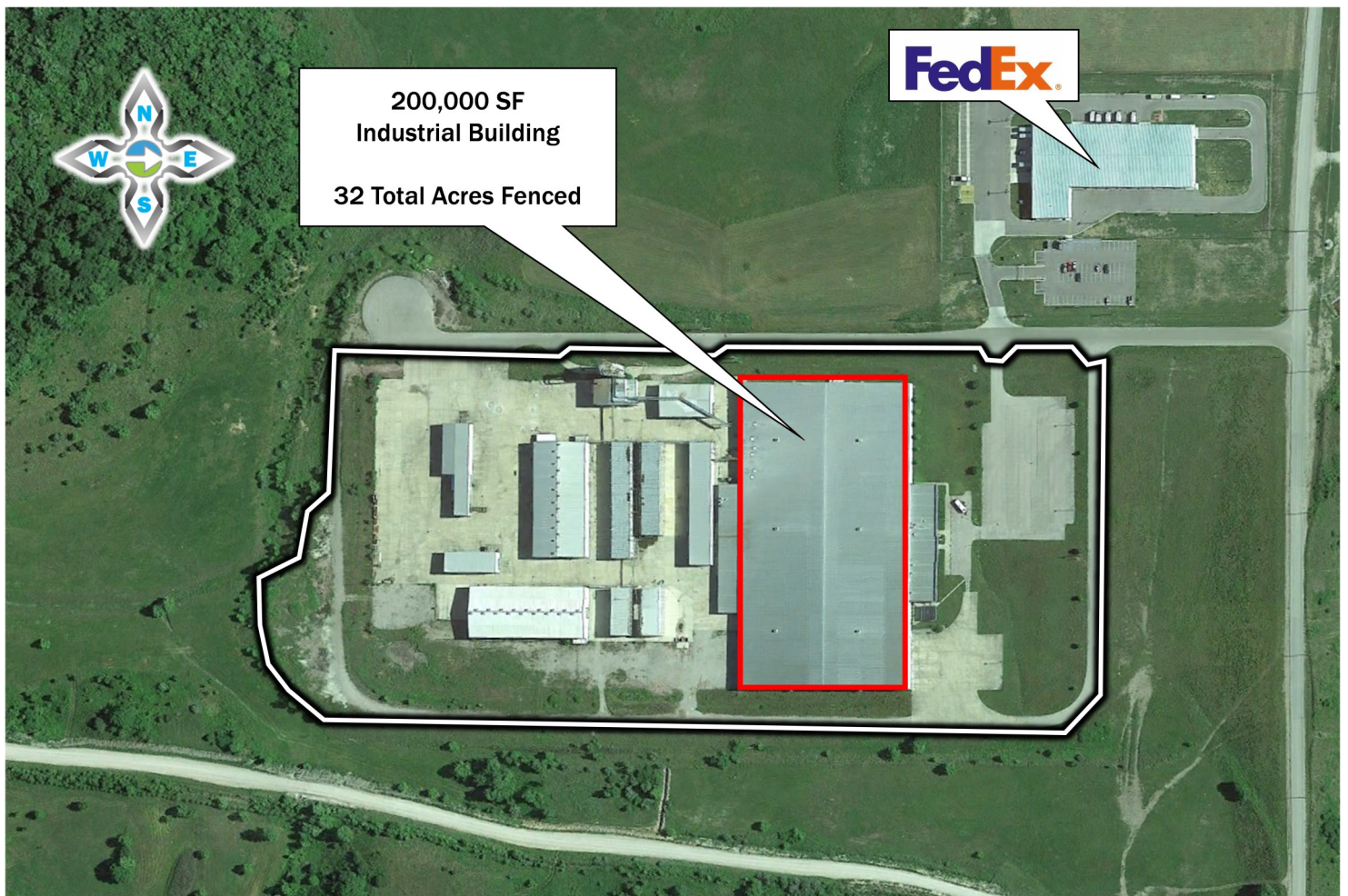
“Elevating Industry”

PERRY COUNTY INDUSTRIAL BUILDING



1. Aerial Map

CHAVIES, PERRY COUNTY, KENTUCKY 37°21'42.68"N - 83°16'49.89"W



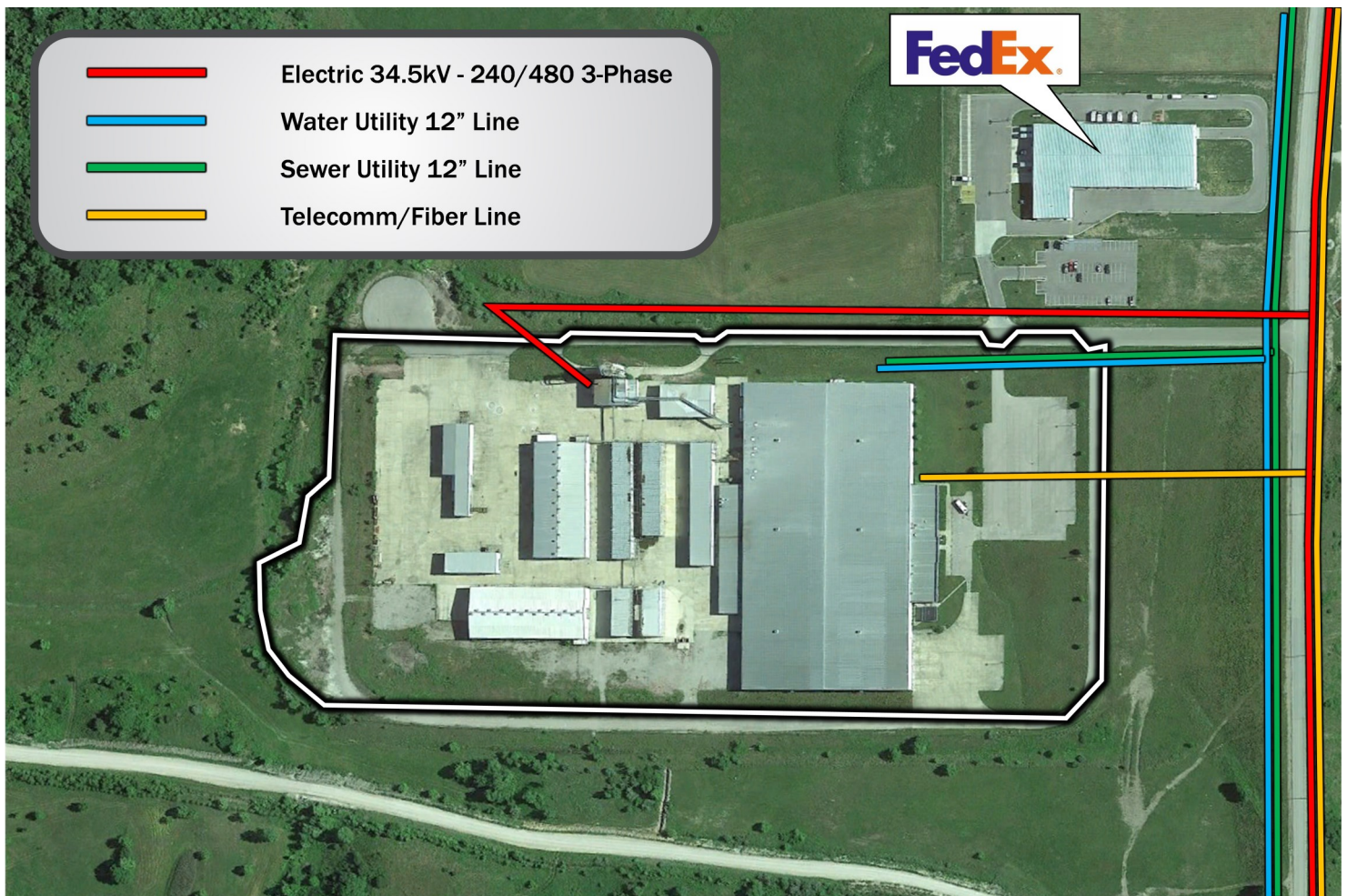
"Elevating Industry"

PERRY COUNTY INDUSTRIAL BUILDING



2. Infrastructure Map

CHAVIES, PERRY COUNTY, KENTUCKY 37°21'42.68"N - 83°16'49.89"W



"Elevating Industry"

PERRY COUNTY INDUSTRIAL BUILDING



3. Interior Photo (Panorama)

CHAVIES, PERRY COUNTY, KENTUCKY 37°21'42.68"N - 83°16'49.89"W



“Elevating Industry”

PERRY COUNTY INDUSTRIAL BUILDING



4. Regional Transportation Map

CHAVIES, PERRY COUNTY, KENTUCKY 37°21'42.68"N - 83°16'49.89"W



“Elevating Industry”

PERRY COUNTY INDUSTRIAL BUILDING



5. Local Map

CHAVIES, PERRY COUNTY, KENTUCKY 37° 21' 42.68" N - 83° 16' 49.89" W



"Elevating Industry"

PERRY COUNTY INDUSTRIAL BUILDING



6. Data

CHAVIES, PERRY COUNTY, KENTUCKY 37°21'42.68"N - 83°16'49.89"W

GENERAL INFORMATION

Building Name:	Perry County Industrial Building
Owner/Broker:	Everett Hannah
Address:	101 Woodmark Way, Chavies, KY 41727
Telephone Number:	270.832.5990
Ownership:	Privately Owned
Other Tenants Nearby:	Federal Express, Sykes Call Center
Zoning:	Industrial—Light
Square Footage:	207,000 Manufacturing / 11,350 Office Space
Additional Acreage:	100
Construction Type:	Metal on Steel Frame
100 Year Floodplain:	No
Ceiling Height:	Min: 23 Max: 30'7"
Floor Thickness:	6" reinforced concrete
Column Spacing:	50' X 54'
Overhead Doors:	3 Drive-in Dock Doors; 4 Tailgate Dock Doors
Parking Spaces:	165

PROTECTIVE SERVICES

Fire Insurance Class Rating:	Class 9
Distance to Nearest Police Station:	Kentucky State Police and Perry County Sheriff are 10 miles away
Distance to Nearest Fire Station:	Hazard Fire Department is 4 miles away
Distance to Nearest Hospital:	Appalachian Regional Healthcare and UK Healthcare Hospital are 9

NATURAL GAS

Provider:	N/A
Gas Main Size:	N/A
Distance in Feet from Building to Gas Main:	2,500 Feet
Gas Pressure:	N/A
Heat Value:	N/A

ELECTRIC UTILITY

Provider:	AEP/Kentucky Power
Transmission Voltage to Building:	69Kv & 138Kv
Distribution Voltage to Building:	480V, 3-Phase
Secondary Voltage to Building:	(3) 200 amp Square D switchgear
Transformer:	(3) 2,500 kVA pad mounted
Is Dual Feed Available from 1 Substations:	Yes

SEWER

Provider:	Hazard Utilities
Sewer Main Size:	8" Main : 6" Line
Is Use of Lift Required:	No
Treatment Plant Type:	Activated Sludge
Treatment Plant Rated Capacity:	3 MGD
Treatment Plant Excess Capacity:	1.8 MGD

WATER

Provider:	Hazard Utilities
Water Main Size:	16" Main : 4" Domestic
Static Pressure:	n/a
Residual Pressure:	54.98 PSI
Flow Per Minute:	1,218.12 GPM
Treatment Plant Rated Capacity:	5 MGD
Treatment Plant Excess Capacity:	544,000 GPD

TELECOMMUNICATIONS

Local Exchange Carrier:	AT&T
ASDL available from C.O. (Analog or Digital):	Yes
C.O. on Fiber Ring:	Yes
Can Dual Service Be Provided from 2 C.O.s:	Yes
Fiber Available:	Yes
Fiber Provider:	Windstream
ISDN Available from C.O.:	Yes
Location of Closest Major Carrier POP (Miles):	12 Miles

TRANSPORTATION

Describe Highway Access:	2 Lane State HWY 15 is adjacent to park connecting to Hal Rogers Parkway (4-Lane). Hal Rogers Parkway connects to Interstate 75, 67 miles west of park
Distance to Regional Airport:	Wendell H Ford Regional Airport is 2 miles north of the park
Distance to National/International Airport:	BlueGrass Airport in Lexington, KY is 110 Miles from park; Tri-Cities Airport in Kingsport, TN is 132 Miles from the park
Name of Nearest Port:	Port of Wurtland
Distance in Miles to Nearest Port:	117 Miles
Type of Port:	Inland Riverport
Rail Service Carrier:	CSX
Main or Short Line:	Main
Spur to Location:	No
Distance to Rail Line:	41,000 Feet
Has Rail Access:	No
Has River Access:	No
Nearest Landfill:	1 Mile
Nearest Hazardous Waste Landfill:	60